

**NEW PRODUCT**

**SIRENS  
SPEAKERS  
SWITCHES**

# Gamma2™ Siren

**100 WATT SELF-CONTAINED ECONOMICAL SIREN**

*Gamma2 is a low cost siren that provides a wide range of features and meets SAE Class A sound requirements and is California Title XIII compliant.*

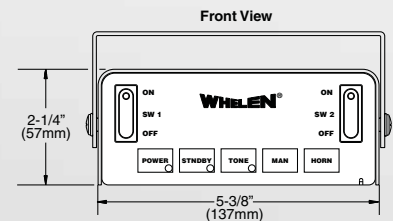


## FEATURES

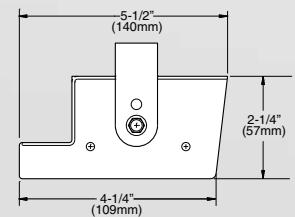
- Meets SAE Class A sound requirements when used with most 100 watt speakers.
- Meets California Title XIII requirements.
- Twenty-three Scan-Lock™ siren tones.
- Two On/Off 20 amp auxiliary rocker switches with LED "On" indicators, control auxiliary equipment (Beacons, Hide-A-Ways, etc.).
- Stand-by button provides Hands-Free operation/override from horn ring.
- Tone button activates Wail tone (may be programmed for other tones).
- Manual button generates a variety of tones as pre-selected by user, up to 3 tones.
- Horn button generates an Airhorn tone.
- Easy to install with standard bail-strap mounting bracket.
- Two year warranty.

## MODEL

**GAMMA2.....** 100 watt siren with two auxiliary switches.



Front View



Side View

## 23 Siren Tones:

Tone Off • Wail • Yelp • Hi/Low • Piercer • Yelp 249 • Warble • Whoop • Mechanical • Pulsed Airhorn • Airhorn Hi/Low • Alternate Wail • Alternate Yelp • Pulsed Piercer • Pulsed Yelp/Airhorn • Wail Coast • Wail Stop • Mechanical Coast • Mechanical Stop • Hi-Wail-Coast • Hi-Wail-Stop • Airhorn Hi • Airhorn Low

**WHELEN®**  
ENGINEERING COMPANY, INC.

51 Winthrop Road  
Chester, Connecticut 06412-0684  
(860) 526-9504 • Fax: (860) 526-4078  
www.whelen.com

Whelen Engineering reserves the right to upgrade and improve products without notice.  
© 2010 Whelen Engineering Company, Inc. Printed in U.S.A.  
Code No. 12372A - 04/10

Form# GAM0410

**American Employees, American Manufacturing, American Pride!**