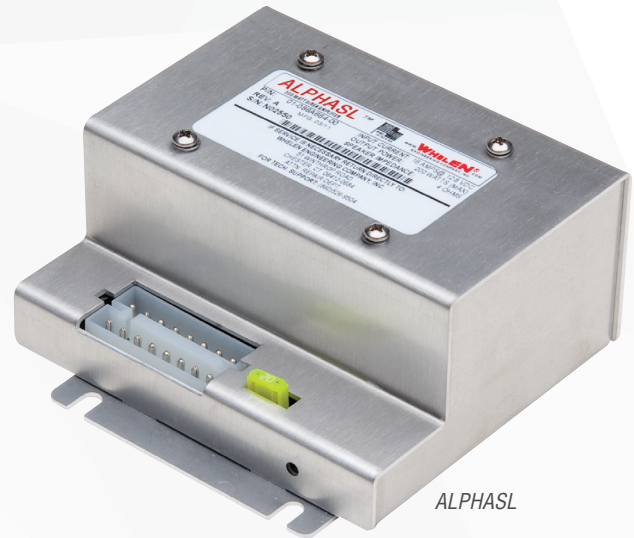


The economically priced Alpha Siren Series delivers 100 or 200 watts of siren warning power, hands-free operation, multiple warning tones, and horn ring override capability. Alpha Sirens allow easy set-up and configuration to meet local requirements without special ordering.



ALPHA12S



ALPHASL

## FEATURES

- Meets Class A and California Title XIII requirements for sound output when used with one 100 watt Whelen speaker
- Compact design is ideal for undercover and volunteer applications
- Control siren tone through horn ring or separate switches
- Hands-free operation
- Harmonically rich composite Airhorn tones
- Output open/short circuit protection
- Easy to install. Pre-wired with quick disconnect plugs for easy service and fast replacement
- 12 VDC
- Two year warranty

## ALPHA12S

- Five siren tones
- Operates one 100 watt siren speaker
- Dip switch access allows instant configuration of popular operating features
- Compact design is easy to install under the dash, in a console, or in a rack
- Dimensions (with bail bracket): 3.46" (8.78cm) H, 6.90" (17.52cm) W, 4.62" (11.73cm) D

## ALPHASL

- 18 Scan-Lock™ siren tones
- Operates one or two 100 watt siren speakers
- Five optional switch panels available. Will also operate from customer supplied switching controls
- Dimensions: 2.25" (5.71cm) H, 4.75" (12.06cm) W, 5.00" (12.70cm) D

## MODELS

ALPHA12S	Self-contained 100 watt siren, dip switch configuration
ALPHASL	Remote 200 watt siren, Scan-Lock programmable

## OPTIONAL SWITCHES

ALPHA 1	Single rocker switch for use with Hands-Free operation
ALPHA 2	Single On/Off Hands-Free activation plus momentary switch for Airhorn
ALPHA 3	Tone 1/Off/Tone 2 switch operation plus momentary switch for Airhorn operation
ALPHA 4	Three switch operation, one On/Off, one Tone 1/Hands-Free/Tone 2 plus momentary switch for Airhorn
ALPHA 5	Three position toggle switch, controls 3 siren tones and other warning lights or device functions

Contacts rated at 30 amps.

ALPHA 1-4 Switches include "L" mounting bracket. NOT for motorcycle use.



ALPHA1-5  
Remote Switches  
for Model ALPHASL Only

## SIREN TONES

ALPHA12S	ALPHASL
Wail	Wail
Yelp	Yelp
Piercer	Piercer
Hi/Low	Hi/Low
Airhorn	Y249
B-Wail	Warble
B-Yelp	Whoop
B-Hi/Low	Mechanical
	Pulsed Airhorn
	Airhorn Hi
	Airhorn Low
	Alternate Wail
	Alternate Yelp
	Pulsed Piercer
	Pulse Yelp/Airhorn
	B-Wail
	B-Yelp
	B-Hi/Low

## SPECIFICATIONS

FUNCTION	ALPHA12S	ALPHASL
Input Voltage	10-16 VDC	10-16 VDC
Polarity	Negative ground	Negative ground
Polarity Protection	Diode/Fuse	Diode/Fuse
Output Power	100 Watts	200 Watts
Output Load	One 11 OHM speaker	Two 11 OHM speakers
Input Current (siren on)	8 amps (max)	15 amps (max)
Standby Current	10 ma (max)	10 ma (max)
Fuse	10 amp auto fuse	20 amp
Fuse Mounting	Spade type, in-line connector	Spade type, PC board
Output Short Protection	Fuse	Fuse
Horn/Ring Control	+12VDC or ground	+12VDC or ground
Weight	2.2 lbs / 1 kg	2.4 lbs / 1.2 kg
Operating Temperature	-30° C to +60° C	-30° C to +60° C
Operating Humidity	0-95% Non-condensing	0-99% Non-condensing
Connector	One 6 pin amp Mate-N-Lok®, 24" wiring pigtail	One 16 position input connector

**WARNING:** These products may contain chemicals known to the State of California to cause cancer and birth defects or other reproductive harm. For more information, visit [whelen.com/regulatory](http://whelen.com/regulatory).

**WHELEN**

51 Winthrop Road  
Chester, Connecticut 06412-0684  
(860) 526-9504 www.whelen.com

Whelen Engineering reserves the right to upgrade and improve products without notice.  
© 2019 Whelen Engineering Company, Inc. Printed in U.S.A.  
Code No. 10105H - 10/03/2019

All products proudly designed, manufactured,  
and assembled in the U.S.A.  
• ISO 9001 Registered QMS